

OUR SPECIALTY  
**WORK  
BENCHES**  
FOR ALL!

sjobergs.se

# sjobergs original 1100 adjustable

SPECIFICATIONS	inches	mm
Nr 33073		
Length of bench top	42 <sup>1/8</sup>	1070
Total length	46 <sup>0/0</sup>	1170
Width of bench top	16 <sup>0/0</sup>	405
Total width	16 <sup>0/0</sup>	405
Thickness of worktop	2 <sup>3/64</sup>	60
Thickness of skirt	2 <sup>61/64</sup>	75
Vise capacity	5 <sup>29/32</sup>	150
Working height	28-43	700-1100
Total weight	93 lbs	42 kg

## SJÖBERGS 1-STATION CONSISTS OF:

- 1 x 33110 TOP
- 1 x 33160 FRONT VISE
- 1 x 33275 TRESTLE ELECTRICAL
- 1 x 33383 JAW CUSHIONS, pair
- 1 x 33384 JAW CUSHIONS, pair
- 1 x 33636 HOLDFAST
- 1 x 33291 BENCH DOGS, pair

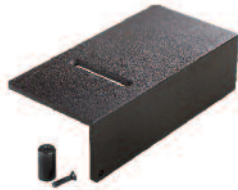
SJÖBERGS ORIGINAL 1100, 1-STATION, EL

Nr 33073



SJÖBERGS ORIGINAL 1100 1-STATION ELECTRICAL  
Lacquered beech. Traditional designed and sturdily built.  
The vise sliding mechanism is smooth and if necessary can  
be easily adjusted. Electric trestle in Alu.

### UNIVERSAL ANVIL



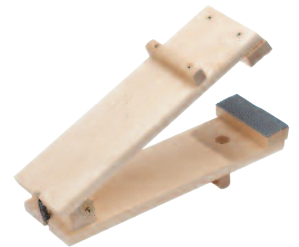
Nr 33617

### BENCH DOGS



Nr 33291 2-pack

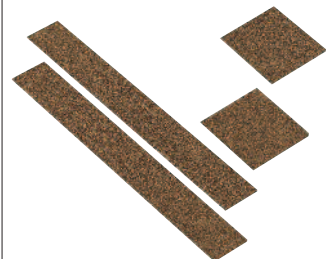
### FILE CLAMP



Nr 33490

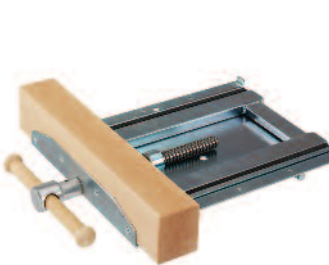


### JAW CUSHIONS



Nr 33384 SHOULDER VISE  
Nr 33383 FRONT VISE/SPARE VISE

### SPARE VISE



Nr 33160

### HOLDFAST



Nr 33636

### TABLE VISE WITH ANVIL



Nr 33425

### TABLE VISE HOLDER



Nr 33420



SJÖBERGS WORKBENCHES AB  
SE- 576 95 Stockaryd • Sweden  
Tel +46 (0)382-257 00  
office@sjobergs.se • sjobergs.se

