

PRESS RELEASE MARCH 2016

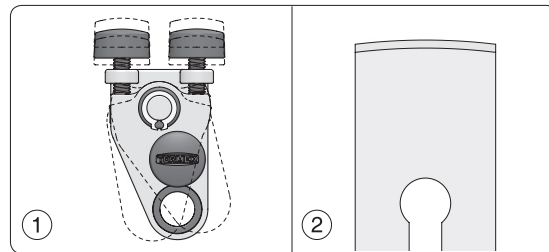


Ensure a 90° corner with this new Tormek jig!

Tormek is now introducing the new SE-77 Square Edge jig – a further development of their SE-76 jig. The new design has two special screws that allow a fine adjustment to get a perfect 90° corner or set the jig for a slightly convex shape.

Tormek continues to improve their range and their newest jig shows the company's dedication to providing solutions for the users. The adjustable side on the SE-77 allows the user to fine tune the setting by simply loosening one of the knobs and tightening the other. With this new design, you can always get your desired shape, straight or convex.

Adjustable side (1). If needed, you can fine tune to get a perfect 90° corner. When using the smaller knobs, you can also sharpen to a slightly convex shape (2).



SE-77 will be available in stores as from the second quarter of 2016. For information about your nearest retailer, visit www.tormek.com

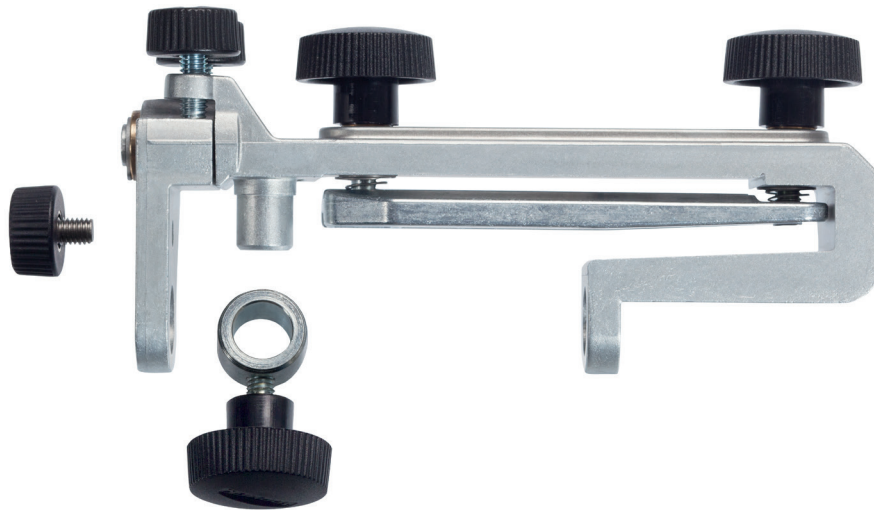
Note to the editor:

For further information contact Pontus Gyllby

Phone: +46 581-14 790, E-mail: pontus.gyllby@tormek.se

High-resolution images will be available at www.tormek.com/images

For attached images, see next page.



Tormek is recognized for its unique sharpening system, holding over 13 patents and offers the widest product range on the market including sharpening jigs and accessories specifically designed to achieve the optimal sharpness on all kinds of edge tools. Based in Sweden, Tormek exports to over 30 countries worldwide. The Tormek sharpening system is used widely by cabinet makers, carpenters, woodcarvers and woodturners, as well as in restaurants, industrial kitchens, professional sharpening businesses and households.